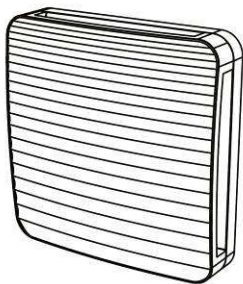
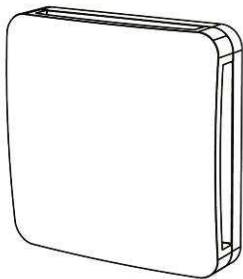
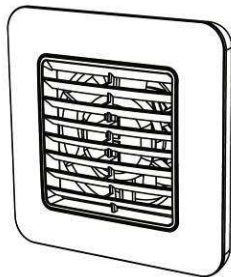
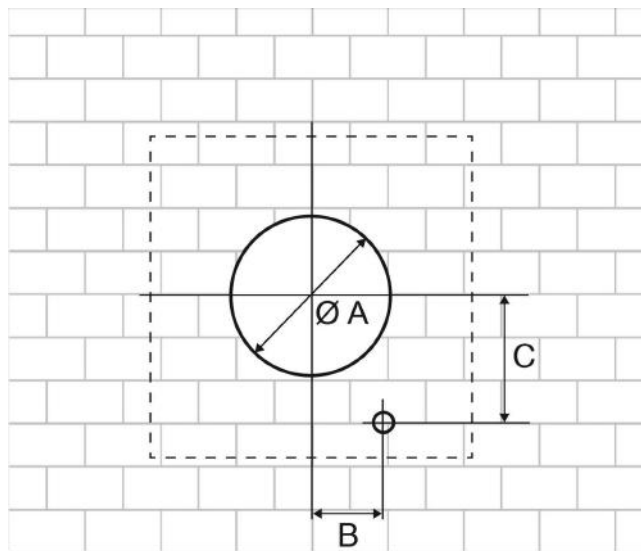


**S**O.ERRE



**IN  
ALBA**

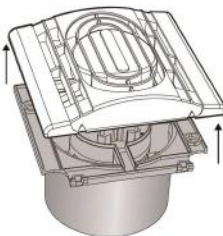
**UNICO  
ONDA**



|               | <b>ØA</b> | <b>B</b> | <b>C</b> |
|---------------|-----------|----------|----------|
| <b>9/3,5"</b> | 92,5      | /        | /        |
| <b>10/4"</b>  | 100,0     | 37,20    | 64,50    |
| <b>12/5"</b>  | 120,0     | 40,25    | 74,50    |
| <b>15/6"</b>  | 150,0     | 50,00    | 89,00    |

IN

9/3,5



10/4  
12/5  
15/6



IN A

10/4  
12/5  
15/6



UNICO / UNICO C

9/3,5



10/4  
12/5  
15/6



ALBA-ONDA

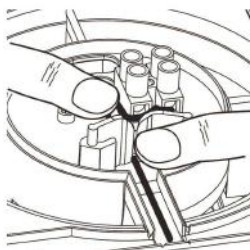
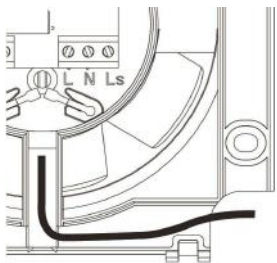
10/4  
12/5  
15/6



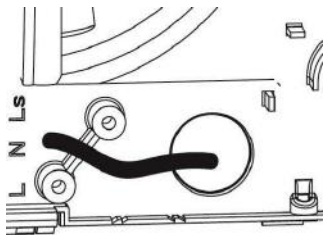
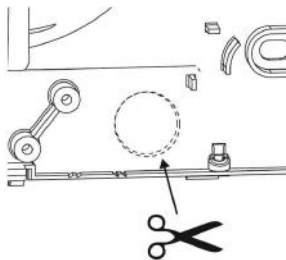
A



9/3,5



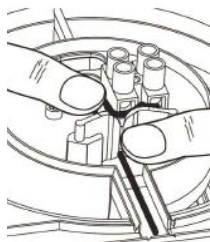
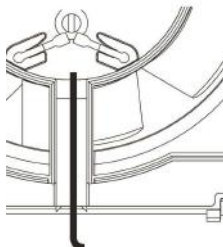
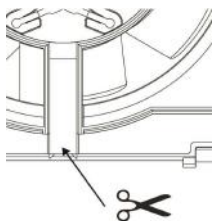
10/4 - 12/5 - 15/6



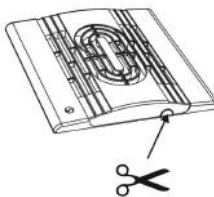
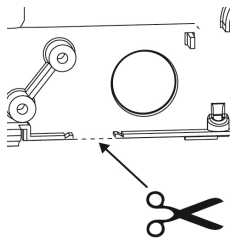
**B**



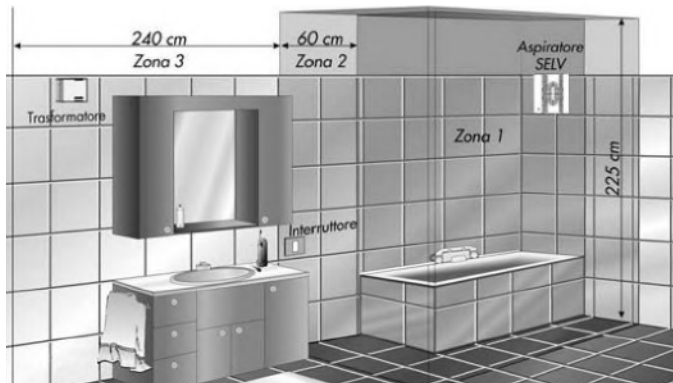
9/3,5



10/4 - 12/5 - 15/6

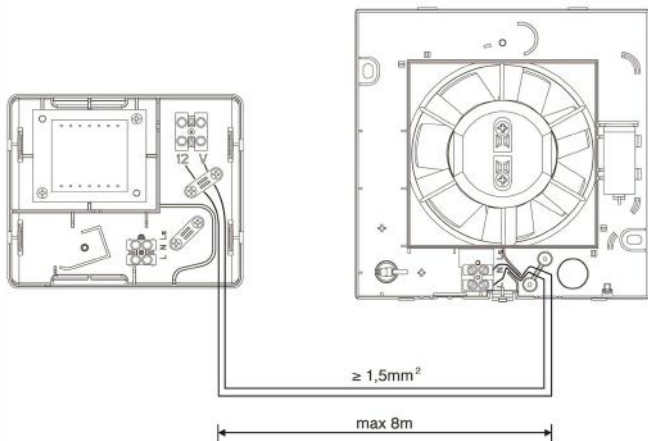


## SELV 12V



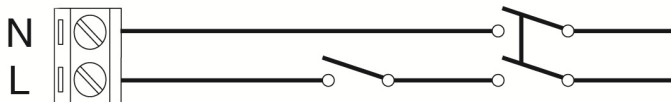
- Zone 1 e 2 divieto d'installazione apparecchi a 220-240V (esempio dalla Norma CEI 64-8 per impianti elettrici).
- Zone 1 and 2 installation of 220-240V appliances is prohibited (example from the Standard IEC 364-7 for electrical systems).
- Volumes de sécurité 1 et 2 défense d'installation d'appareils 220-240V (exemple tiré de la Norme CEI 364-7 pour l'installation électriques).
- Zone 1 und 2 verbot der Installation von Apparaten mit 220/240V. (Beispiel der Norm IEC 364-7 für Elektroanlagen).
- Zones 1 en 2 installatieverbod voor toestellen van 220-240V (Voorbeeld van de EEG Reglement 64/8 voor elektrische installaties).

- Volumen de seguridad 1 y 2 prohibida la instalación de aparatos 220-240 V (ejemplo sacado de la Norma CEI 364-7 para instalaciones eléctricas).
- Instalação de aparelhos de 220-240V é proibida na Zona 1 e 2. (informação retirada da Norma CEI 364-7 - para instalações eléctricas).
- Απαγορεύεται η εγκατάσταση συσκευών 220-240 στις ζώνες 1 και 2 (παράδειγμα από την πρόδιαγραφή ΙΕΣ 364-7 για τις ηλεκτρικές εγκαταστάσεις).
- В зонах 1 и 2 устанавливать электрооборудование с напряжением электропитания 220-240 В ЗАПРЕЩАЕТСЯ (выдержка из стандарта ИЕС 364-7 для электротехнических систем).

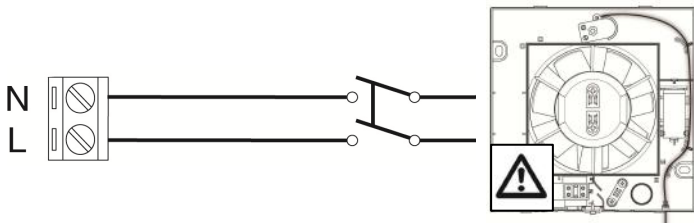




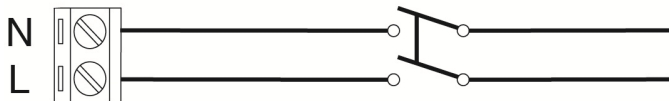
IN – IN A – UNICO – UNICO C – ALBA – ONDA  
 9/3,5 – 10/4 – 12/5 – 15/6 – 10/4 BB – 12/5 BB – 15/6 BB  
 ALIMENTATORE 12V SELV



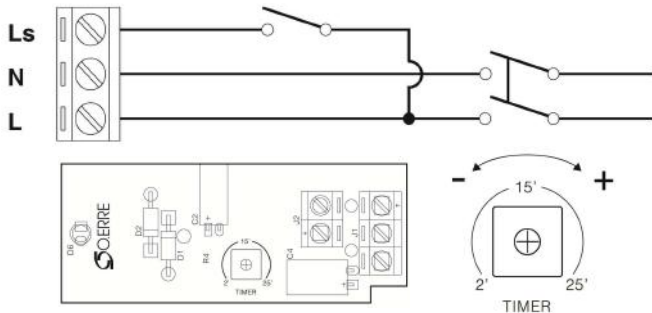
IN – IN A – UNICO - UNICO C  
 10/4 PC – 12/5 PC – 15/6 PC – 10/4 BB PC – 12/5 BB PC – 15/6 BB PC –  
 ALIMENTATORE 12V PC



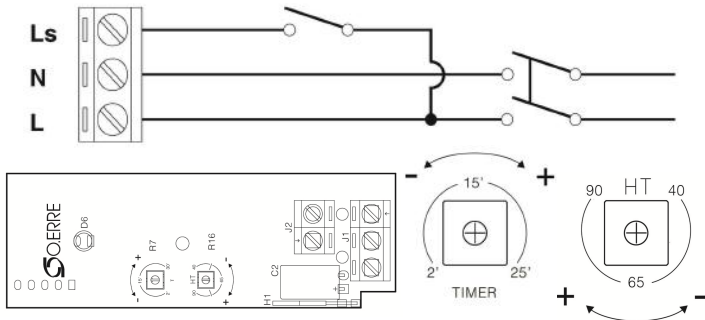
IN – IN A – UNICO - UNICO C  
 10/4 PIR – 12/5 PIR– 15/6 PIR– 10/4 BB PIR– 12/5 BB PIR– 15/6 BB PIR



**IN – IN A – UNICO - UNICO C – ALBA – ONDA**  
**9/3,5 T - 10/4 T- 12/5 T – 15/6 T – 10/4 BB T – 12/5 BB T – 15/6 BB T –**  
**ALIMENTATORE 12V SELV TIMER**



**IN – IN A – UNICO - UNICO C – ALBA – ONDA**  
**10/4 HT- 12/5 HT –15/6 HT – 10/4 BB HT – 12/5 BB HT – 15/6 BB HT –**  
**ALIMENTATORE 12V SELV HT**



IN

9/3,5

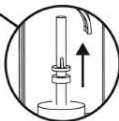
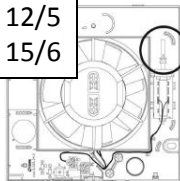


10/4  
12/5  
15/6



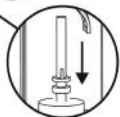
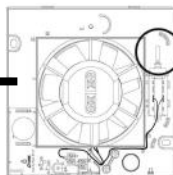
IN A

10/4  
12/5  
15/6



OFF  ON

30"



UNICO / UNICO C

9/3,5



10/4  
12/5  
15/6

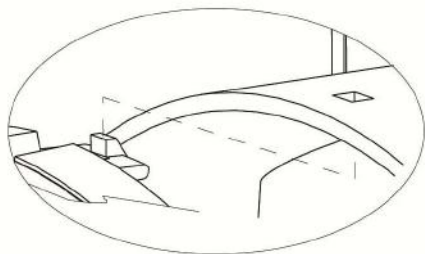
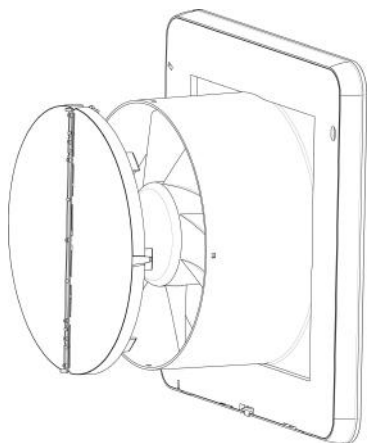


ALBA-ONDA

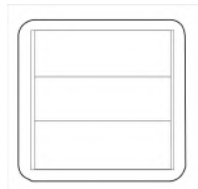
10/4  
12/5  
15/6



## UNICO C – ALBA - ONDA



|                     |     |         |
|---------------------|-----|---------|
| Serranda            |     |         |
| Shutter             |     |         |
| Volet               |     |         |
| Verschloßklappe     | Ø10 | 0080100 |
| Sluiter             | Ø12 | 0080300 |
| Persiana            |     |         |
| Registo             |     |         |
| ΠΕΡΣΙΔΑ             |     |         |
| ИНЕРЦ ИОНАЯ РЕШЁТКА |     |         |



|                   |     |         |
|-------------------|-----|---------|
| Griglia esterna   |     |         |
| External grille   |     |         |
| Grille extérieure |     |         |
| Außen-            | Ø10 | 0080000 |
| Lüftungsgitter    | Ø12 | 0080200 |
| Buitenrooster     | Ø15 | 0090700 |
| Rejilla exterior  |     |         |
| Grelha externa    |     |         |
| ΕΞΩΤΕΡΚΗ ΓΡΙΛΛΙΑ  |     |         |
| НАРУЖНАЯ РЕШЁТКА  |     |         |



|                       |     |         |
|-----------------------|-----|---------|
| Kit vetro*            |     |         |
| Glass kit*            |     |         |
| Fensterkit*           | Ø10 | 0059100 |
| Set voor raammontage* | Ø12 | 0059200 |
| Kit para ventana*     | Ø15 | 0059300 |
| Kit de janela*        |     |         |
| ΚΙΤ ΤΖΑΜΣΙ *          |     |         |
| АДАПТЕР ДЛЯ *         |     |         |
| ОКОННОГО МОНТАЖА      |     |         |



\*Only for IN series

EP S.p.A.  
Via del Commercio, 1 - 25039 - Travagliato (BS)