



MIO /ARTE /RING/ TREND

Wall Fan
Ventilator Axial de Perete
Wand Axialventilator
Ventilador Axial Muro
Aspiratore Elicoidale da Parete
Ventilateur Hélicoïde Murale

Instruction manual EN RO GE SP IT FR

EN: CONTENT

1.	PRECAUTIONS	4
2.	MODELS	8
3.	INSTALLATION INSTRUCTIONS	10
4.	ELECTRIC CONNECTION	13
5.	MAINTENANCE & SERVICE	16

Declaration of conformity

Manufacturer:

Intax Trading SRL - 14B Ion Creanga Str., 075100, Otopeni, Ilfov, Romania.



This product complies with the following European directives:

2014/30/EU

(EMV)

2014/35/EU

(LVD)

2011/65/EU (RoHS)

Please read this manual carefully to operate this fan

PRECAUTIONS

1. Remove packing and make sure that the appliance is undamaged. In case of doubt do not operate the appliance and contact our service center.
2. This appliance must only be used for the purpose it was built for, i. e. air exhaustion for domestic and similar purposes.
3. It should be installed on the wall, window or ceiling. The installation of the fan should be made with the plug and screws supplied with the set. The outlet must be done to the airing room or the existing common system for airing in the building. Installation shall be done under supervision of an authorized contractor.
4. Before carrying out any cleaning or maintenance disconnect the mains electrical supply to the fan by means of a double pole switch or remove the plug.
5. In case of break-down or faulty operation, switch off and do not tamper with the appliance. If repairs are

necessary, contact only technical service center approved by the manufacturer and ask for original spares. No observance of the above could put the safety of the appliance at risk.

6. When the appliance is out of use, remove the power lead. Moreover, make potentially dangerous parts harmless, especially with regard to children who might play with the appliance when it is not in use.

7. Max. room temperature 40°C.

8. Appliance must be installed at mt. 2,3 minimum.

9. Once installed the (M) will start up as soon as it detects the presence of humans at a maximum distance of 5 metres, and will stop after a certain time if it can no longer detect the presence of humans. The extractor can be adjusted from 1 min to 15 mins. by turning the button of the electronic circuit clockwise.



WARNING: This symbol indicates precautions that must be taken to avoid injury

* Do not use this appliance for functions other than those described in this instruction booklet.

* After removing the appliance from its packaging, ensure that it is complete and undamaged. If in doubt, contact a professionally qualified electrician. Do not leave packaging within the reach of children or infirm persons.

* Certain fundamental rules must be observed when using any electrical appliance:

- a) never touch appliances with wet or damp hands;
- b) never touch appliances while barefoot.

* This appliance is not suitable for use by children or by individuals with reduced physical, sensorial or mental capacities, or by inexperienced or untrained individuals, unless they are supervised or instructed in its use by a person responsible for their safety. Children must always be supervised to ensure that they do not play with the appliance.

- * Store the appliance out of the reach of children and infirm persons if you decide to disconnect it from the power supply and no longer use it.
- * Do not operate the appliance in the presence of inflammable vapors (alcohol, insecticides, petrol, etc.).



CAUTION:

this symbol indicates precautions that must be taken to avoid damaging the appliance .

- * Do not make modifications of any kind to this appliance .
- * Do not expose this appliance to the weather (rain, sun, etc.)
- * Regularly inspect the appliance for visible defects. If any faults are found, do not operate the appliance. If the appliance does not function correctly or develops a fault, contact us immediately and ensure that only original spares are used for any repairs.
- * Should the appliance be dropped or suffer a heavy blow, have it checked immediately.
- * The appliance must be installed by a professionally qualified electrician.
- * The electrical system to which the appliance is connected must conform to applicable standards.
- * The appliance is double insulated and therefore does not need to be earthed.
- * Do not operate the fan with a damaged cord or plug, after a malfunction or if there is a drop or damage in any manner.
- * The electrical power supply/socket to which the appliance is to be connected must be able to provide the maximum electrical power required by the appliance. Otherwise contact an electrician to make the necessary modifications before proceeding.
- * A multi-polar switch must be used to install the appliance.

The gap between the switch contacts must be no less than 3 mm.

* Switch off the appliance at the installations main switch:

a) if the appliance does not function correctly;

b) before cleaning the outside of the appliance ;

c) if the appliance is not to be used for any length of time.

* The room must have an adequate source of replacement air for this appliance to function effectively. Moreover, if there is any non- sealed combustion based appliance such as a water heater, gas stove, etc. in the same room, air replacement must be sufficient for all appliances to work effectively together.

* The appliance must either exhaust directly to the outside or into a short duct (max 400 mm in length to ensure certified performance). Efficiency losses will occur if the appliance is installed in ducting subject to any appreciable back pressure.

* The appliance cannot be used to control activation of water heaters, room heaters, etc. nor must it be connected to the hot air ducts used by other appliances.

* The air to be extracted from the room must be clean (i.e. free of grease, soot, chemical and corrosive agents, and explosive or fam- mable mixtures) and must not exceed a temperature of 40°C.

* Keep the appliances inlet and outlet grilles free to ensure an optimum fow of air.

* Install the appliance so that the impeller is inaccessible from the air- outlet side as verified by contact with the Test Finger, in compliance with the current safety regulations. If this is not possible, the relevant protection accessory must be installed.

* Model (H): do not cover or obstruct the humidity sensor grille.

* Model(M): do not cover the lens of the presence sensor.

NOTICE (For Fan with front shutter items)

1. The shutter operationed by Electric-Thermo Switch automatic open and close .
2. Don 't push the Fan shutter by hand or else tooling.

3. The shutter will be opened after 40 second when the Fan on.
4. The shutter will be closed after 40 second when the Fan off.

MODELS

A. (S) Standard Model

This model is operated by switching it on by means of the power switch.

B. (T) Timer Model

This model is equipped with a timer which allow the fans to run on after the switch has been turned off factory -set for a minimum operating time of 3 minutes. The timer can be adjust to settings between approx. 1 and 25 minutes by means of the timer.

C. (H) Humidity Model

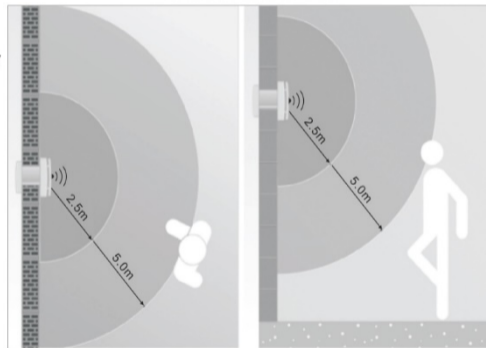
This model has a preset humidity sensing circuit that switches it on when the relative humidity exceeds 40% to 100%. The circuit is also equipped with a timer that can be adjusted to settings between approx. 1 and 25 minutes by means of the timer.

D. (M) Motion Model

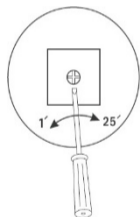
The product is equipped with an electronic circuit with a sensor(PIR) which brings the unit into operation when it detects the presence of a person within its range of action(Presence distance from 1-5m).

This model is equipped with timer factory- set for a minimum operating time of 3 minutes. The timer can be adjust to settings between approx. 1 and 25 minutes by means of the timer.

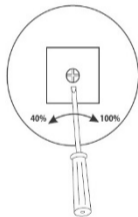
Presence detection area



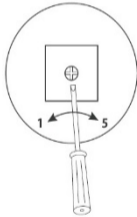
Adjusting the timer



Adjusting the humidity sensor



Adjusting the presence sensor



INSTALLATION INSTRUCTIONS

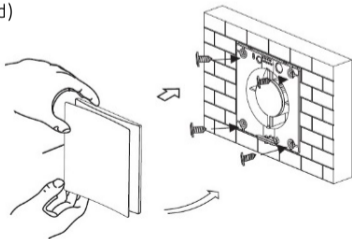
Caution: make sure power is switched off at service panel before starting installation.

note :the location of installation must be near a socket outlet. a licensed electrician will be required to install the socket outlet.

WALL INSTALLATION

1. Ensure to choose right voltage shown in the label before connecting with power source.
2. Cut an appropriate size hole in the wall, ensure there are no cables or pipes buried in the wall when cutting. The internal and external wall flush, allow the ducting to slope slightly to the external wall, this will allow drainage of any ingress from rain.
3. Remove the front cover of fan and position the fans against the wall and mark the four fixing points and cable entry, then to drill to suit.
4. Bring the cable to the unit via a double pole switch with a minimum 3mm separate on all poles.
5. Bring the main cable through the cable entry and fix the fan body into position.
6. Fix the front cover and external shutter (External shutter not supplied)

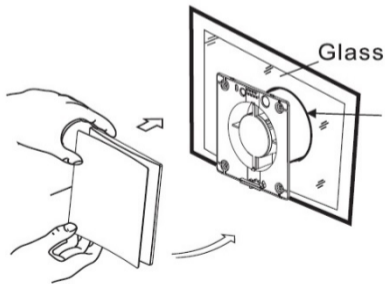
Note: picture for illustration only and may not represent the actual product.



GLASS-WINDOW INSTALLATION

1. Before commencing any cutting, check in the windows that there is no obstruction such as windows frames, or joints and that there is sufficient tight clearance for the housing.
2. Position the fan against the window glass and mark then to cut to suit.
3. Bring the cable to the unit via a double pole switch with a minimum 3mm separate on all poles.
4. Use the glass glue to fix the fan body and let the glass glue dry 3 minutes, then the fan will be firmly mounted in glass

Note: picture for illustration only and may not represent the actual product.



Put the glue on the hole edge, then fix the fan body in glass.

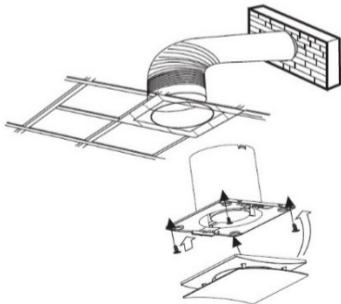
CEILING INSTALLATION

1. Position a suitable location for the fan and cut a flush hole in ceiling to size.
2. Remove the front cover of fan, bring the cable to the unit via a double pole switch with a minimum 3mm separate on all poles.
3. Pass the main cable through the cable entry and fix the unit into position using suitable fixings (the fixings not supplied).
4. Ceiling mounted units must be ventilated to the outside and not into the ceiling to avoid or loft space, using a flexible duct and a back draught shutter to suit.

NOTE: Where ducting (not included) is used, ensure the outlet ducted in such that to avoid the back-flow of gases into the room from the open flue of gas or other fuel-burning appliances.

NOTE: Ceiling exhaust fan units must be ventilated to the outside and not into the ceilingcavity. Use a duct and back draught shutter to suit (not included).

Note: picture for illustration only and may not represent the actual product.



WIRING

1. The fans are double insulated and do not need earth wire.
2. For partition fans, precautions must be taken to avoid any back-flow of gases into the room from open flue gas fire or other appliances.
3. L – connecting to thr Live.
 - N – connecting tot the Neutral
 - T – connecting the light live or switched live (for Timer and Hygro units)

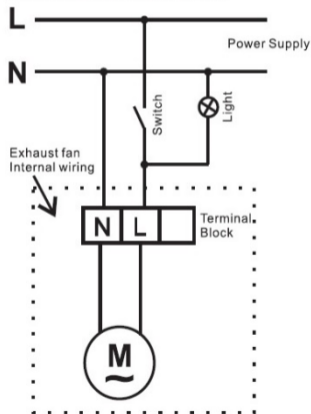
ELECTRIC CONNECTION

The(M) must be connected to a monophase network with the tension and Frequency shown on the notice plate of the fan.The switch connec-tors are situated on the fxing base of the fan.In order to ensure the IP level against water splash use the appropriate cable junction supplied when placing the connection cable.The fan should be connected, in a permanent way to a fixed duct through a double wire with a minimum section of 1 mm² for fixed installation. It does not need ground connection as it is a fan with double insulation.(class II)

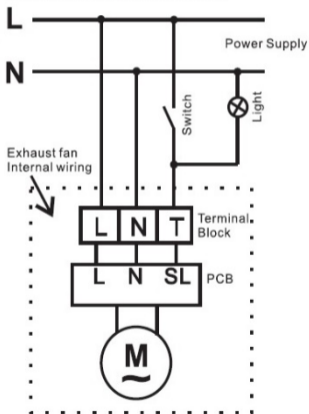
WIRING DIAGRAM

A). WITH LIGHT

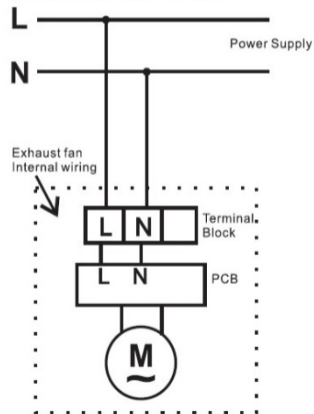
STANDARD WIRING CONNECTION



TIMER or HUMIDITY WIRING CONNECTION

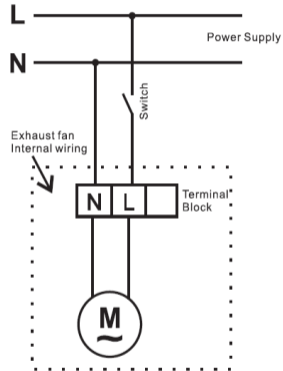


INFRA-RED SENSOR WIRING CONNECTION

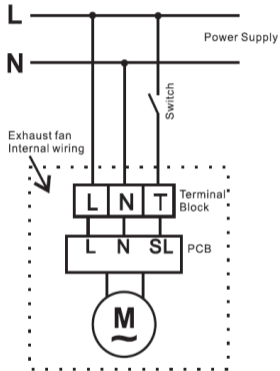


B). WITHOUT LIGHT

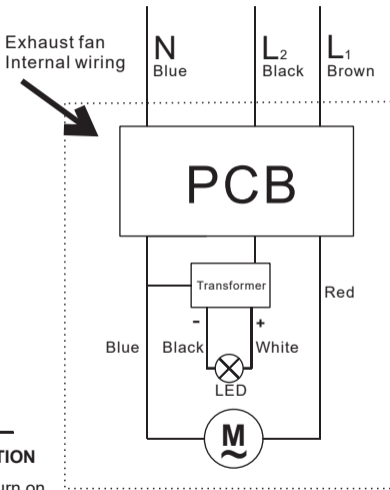
STANDARD WIRING CONNECTION



TIMER or HUMIDITY WIRING CONNECTION

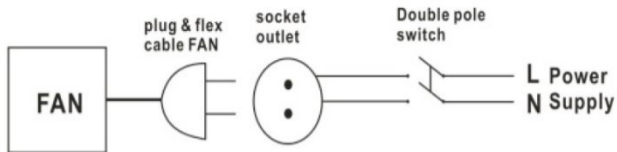


C). WITH LED LIGHT WIRING CONNECTION



INFO for C). WITH LED LIGHT WIRING CONNECTION

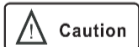
- When power cable is connected to an L₁, the fan turn on .
- When power cable is connected to an L₂, the LED turn on



MAINTENANCE & SERVICE

Before carrying out any maintenance, ensure the power is switched OFF from the mains power supply.

1. Wipe down the fascia and grilles with a wet soapy cloth only. Do not allow water to contact electrical part, such as motor.
2. Never use petrol, benzene, thinner or any other such chemicals for cleaning the ventilating fan.
3. Do not immerse resin parts into hot water over 60°C.
4. Do not place hot objects near or install nearby hot appliances



Caution

This appliance is not intended for use by persons (including children) with reduced physical, sensory or mental capabilities, or lack of experience and knowledge, unless they have been given supervision or instruction concerning use of the appliance by a person responsible for their safety.

If the supply cord is damaged, it must be replaced by the manufacturer, its service agent or similarly qualified persons in order to avoid a hazard.